

# HOLTON WEATHER FORECASTING PTY LTD

Phone 0883886700 Fax 0883886788 holton7@bigpond.com http://www.holtonweather.com

## Holton Weather MONDAY ISSUE WEATHER FORECAST (Issued Monday 4th July 2011)

### The HOLTON SA-VIC-NSW SOCRAM WEATHER FORECAST NOTES:

>>>>>> This current complex low and numerous frontal system, see **SOCRAM Double Peak 1, Graph 1 on Page 2**, looks set to continue on for about 10 days(into early to mid next week) bringing wintery, windy,cold & showery conditions to Southern & Central areas of SA-VIC, plus NE VIC & SE NSW areas...With much improved and less wintery & showery weather in forecast districts further north of those areas just mentioned..

SOCRAM RAINFALL-LOW PRESSURE-FRONTAL PEAKS are noted for the following periods:

In chronological order... as marked on Graph 1 Page 2:

1. Continuing from today Monday 4th July to Sunday 10th-Tuesday 12th July 2011

Double peaked: **Moderate Strength 1150**

2. 17th-18th to 24th July 2011 Double peaked: **Peak Moderate Strength 1300**

3. 28th July to 3rd August 2011 Triple peaked: **Peak Moderate Strength 1150**

4. 8th August to 12th August 2011 Triple Peaked: **Peak Strong Strength 2900**

5. 16th August to 25th August 2011 Double Peaked: **Peak Strong Strength 3000**

>>>>>>The South East Australian Frontal Strength(SEAF),

[Graph 2, on Page 2]...*is oscillating at Above Average levels.*

*Therefore, regular decent winter frontal activity is forecast to continue...*

*And is likely increase in strength further, as we move into August 2011.*

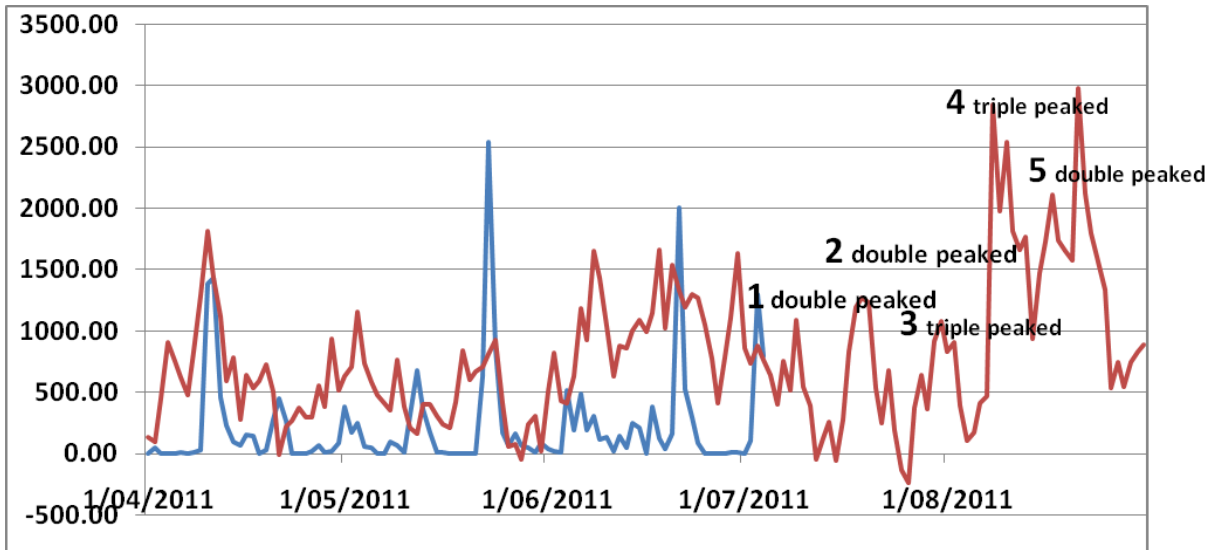
>>>>>>The South-East Australian Moisture Availability For N-NW Cloud-Rain Band

Formation(SEAM) [Graph 2, on Page 2]...has fallen steadily from PLUS 22 level at the end of February 2011, down to a MINUS 11 level now, at the start of July 2011.

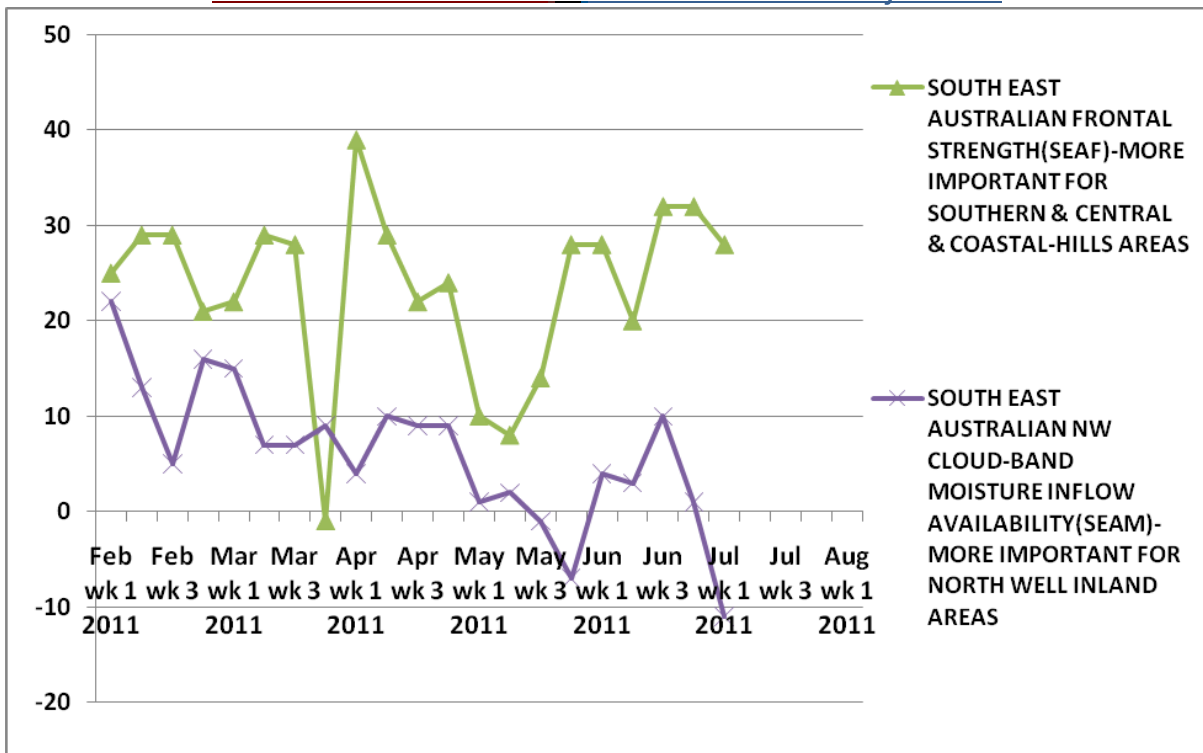
*(However, from the last front, which has just passed, we were able to gain low level moisture from QLD to help form a Patchy, but quite useful, Psuedo NW Cloud-RainBand over SA-VIC and many areas of NSW)*

D A Y	N U M	SOCRAM WEATHER TABLE SA: CENTRAL AGRICULTURAL AREAS	MAX TEMP RANGE	RAIN RANGE mm	PROB OF 10 mm	RAIN mm LIKELY TOTAL	RAIN mm ADDED TOTAL	FROST RISK	WIND DIR	WIND SPEED
Mo	04	SHOWERY PERIODS SEVERAL FRONTS PASSING	LOW 10s	3-15	45%	8	8	X	NW-W	F/STG
Tu	05	SCT SHOWERS STREAM SHOWERS	LOW 10s	2-10	10%	4	12	X	W-SW	F/STG
We	06	SHOWERY PERIODS SEVERAL FRONTS PASSING	LOW 10s	5-20	45%	10	22	X	NW-SW	STRONG
Th	07	SCT SHOWERS STREAM SHOWERS	LOW 10s	2-8	2%	3	25	X	W-SW	FRESH
Fr	08	SHOWERY PERIODS SEVERAL FRONTS PASSING	LOW 10s	2-10	15%	4	29	X	NW-SW	F/STG
Sa	09	SCT SHOWERS STREAM SHOWERS	LOW 10s	2-8	2%	3	32	LOW	W-SW	FRESH
Su	10	SHOWERY PERIODS SEVERAL FRONTS PASSING	LOW 10s	2-10	10%	4	36	LOW	NW-SW	FRESH
Mo	11	SCT SHOWERS STREAM SHOWERS	LOW 10s	2-8	2%	3	39	L-MOD	W-SW	M/FSH
Tu	12	SCT SHOWERS WEAK FRONT PASSING	LOW 10s	1-6	0%	2	41	L-MOD	W-SW	M/FSH
We	13	ISOL SHOWERS	LOW 10s	0-4	0%	0	41	MOD	SW-S	L/MOD
Th	14	FINE	L-M 10s	0	0%	0	41	L-MOD	VRB	L/MOD
Fr	15	FINE	L-M 10s	0	0%	0	41	L-MOD	E-NE	L/MOD
Sa	16	FINE-CLOUD INCREASING	MID 10s	0	0%	0	41	LOW	NE-N	MOD
Su	17	PATCHY RAIN DEVELOPING	M-H 10s	3-12	30%	7	48	X	NE-NW	M/FSH

\*\*\*All Holton Weather Forecasts are based on newly researched, exclusive to Holton Weather, SOCRAM(Solar-Ocean-Cosmic Ray-Atmospheric Model) technology\*\*\*



**GRAPH 1: 1st April to 31st August 2011: HOLTON WEATHER Daily SOCRAM SA-VIC-NSW Areas Rain Actual-Forecast Index vs SA-VIC-NSW Actual Daily Rainfall**



**GRAPH 2: February to August 2011: HOLTON WEATHER South-East Australian Frontal Strength(SEAF) & South-East Australian Moisture Availability For N-NW Cloud-Rain Band Formation(SEAM)**

**Important Notes:** While care is taken in producing these forecasts & reports,, no responsibility is taken for the accuracy of these forecasts, or for the use of them by the customer, or for any loss that may occur by the use of any weather forecasting information contained in these forecasts. These forecasts are Copyright and may not be reproduced in total, or in part, or in any form, or reproduced in total or in part in any Agricultural Consultants Newsletter , or emailed and faxed to other non-clients, or supplied to other persons without the author's consent.  
 (Page 2 of 2 pages)